



# SHOTTO LOGISTICS

*Your all in one Logistics Partner*





# ABOUT US

SHOTTO Logistics, is a limited liability company founded in 2018 and registered under the Corporate Laws of the Republic of Ghana. It was incorporated and commenced business on February 2, 2018.

SHOTTO Logistics is also a registered tax paying business with the Ghana Revenue Authority (TIN C0010359397).

## VISION

"To be a key partner  
in integrated logistics  
in Africa"

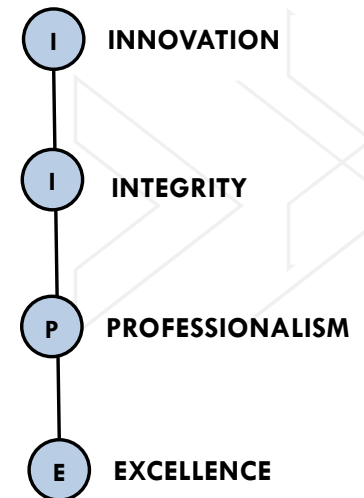
## MISSION

Building a strong relationship with our  
global partners and clients worldwide

Providing excellent service

Adopting modern trends through  
innovation in providing logistics  
solutions

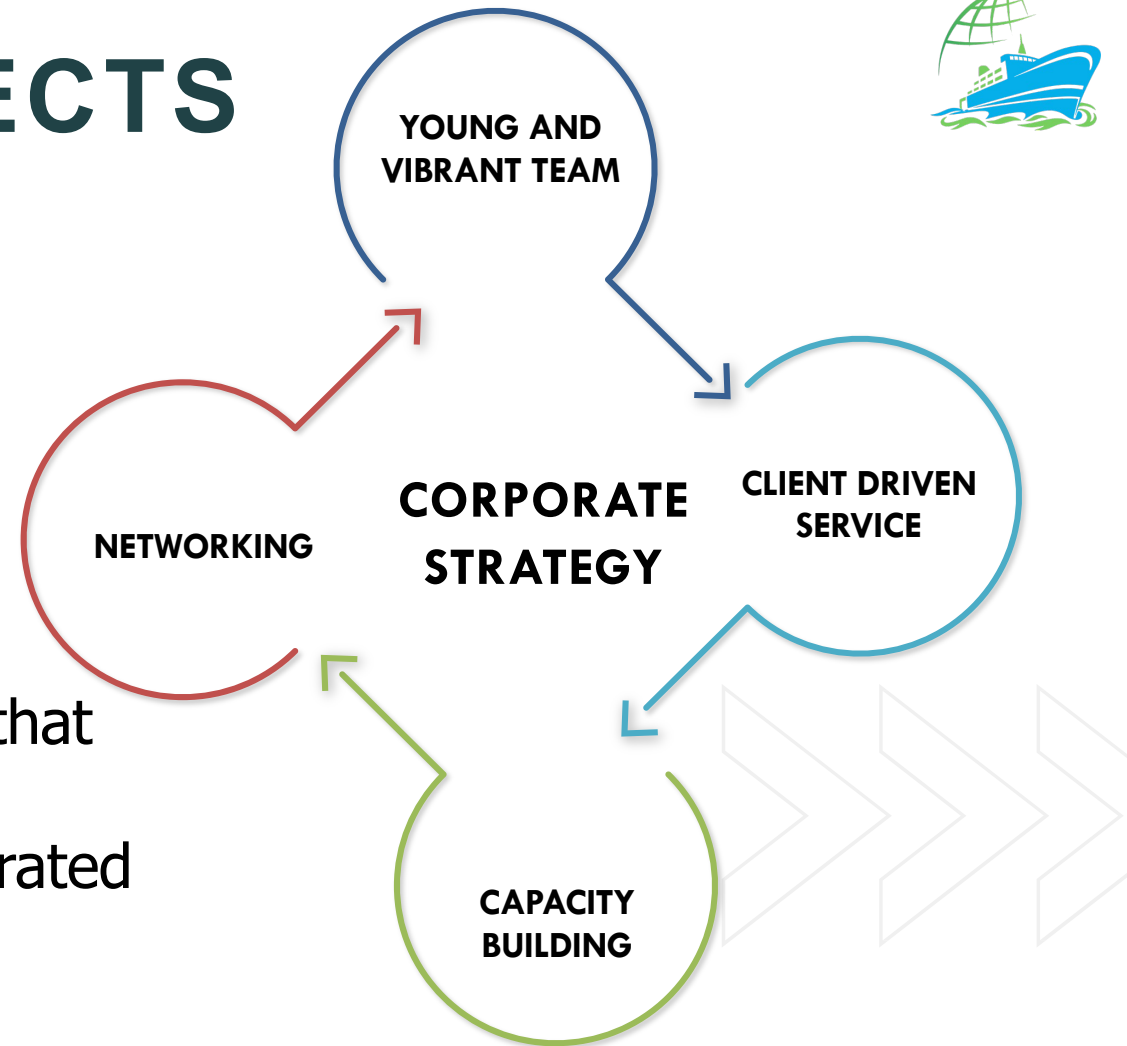
## CORE VALUES



# ////// BUSINESS PROSPECTS

SHOTTO Logistics aspires to be the forerunner in the international market of Seaway and Airway cargo handling in Africa.

SHOTTO Logistics has a firm belief that the future of international freight services lies in providing fully integrated services that meet the needs of customers and guarantees business growth.





# MEET OUR TEAM



REUBEN TETTEH  
**CHIEF EXECUTIVE OFFICER**



AZIZ IBRAHIM  
**CHIEF OPERATIONS OFFICER**



DANIEL TETTEH  
**FINANCE DIRECTOR**





FRANCISCA ENGMANN  
**FINANCE OFFICER**



ROCKSON NYADEDZOR  
**LOGISTICS OFFICER**



BARBARA ADDO  
**ADMINISTRATOR**



LYDIA TETTEH  
**SALES OFFICER**





# WHAT WE DO

We offer the following services

LCL Distribution

Breakbulk & RoRo

Project Cargo Handling

Consolidation/Deconsolidation

Freight Forwarding

Air & Sea Customs Clearance

Import & Export

Transit Handling

Warehousing / Storage

Packaging

Door to Door Logistics

Relocation





# EXECUTED PROJECTS - NOTABLE



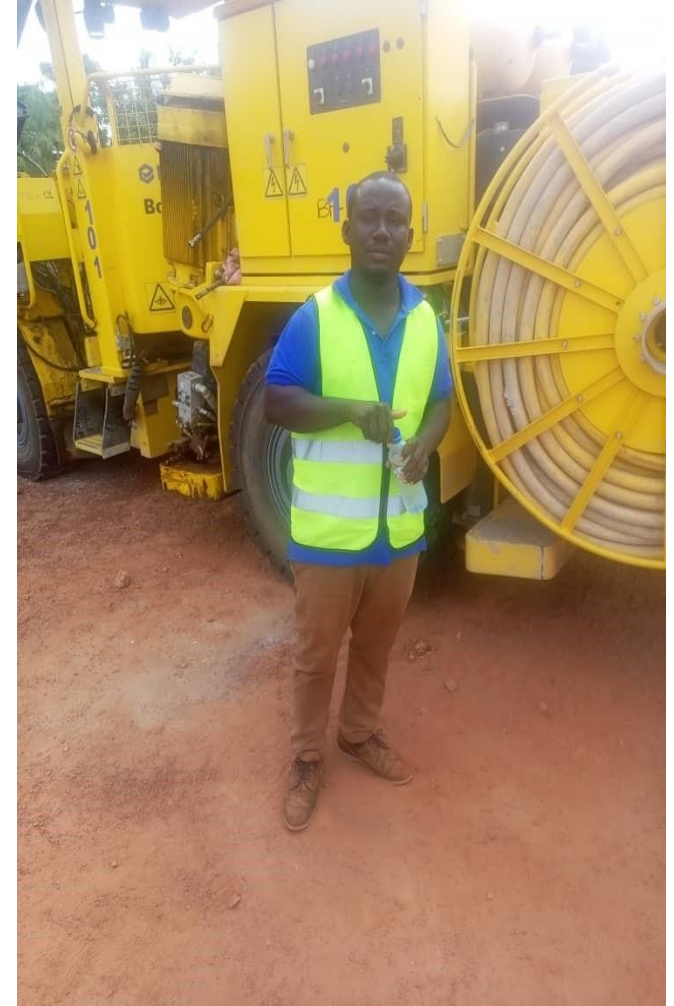
SHOTTO Logistics is experienced in all kinds of shipments be it Pharmaceuticals, Perishables, Automobiles, Live pets, Live plants, Project cargos, Out of gauge cargo, Palletized freight, Bulk materials, hazardous cargos etc. Detailed below are some notable services provided;



# GALLERY – NOTABLE PROJECTS



**150CBM of Mining Equipment  
cargo moved from Balago-  
Burkina Faso to Bea  
Mountain-Liberia**







**Exportation of 40 Tons of MERCEDES BENZ TRUCK HEAD  
From Africa (Ghana) to Europe (Spain)**









At **SHOTTO Logistics**, we address each client request with 5 basic Business practices pivoted on promptness in execution.



1. Prompt response  
to client's request



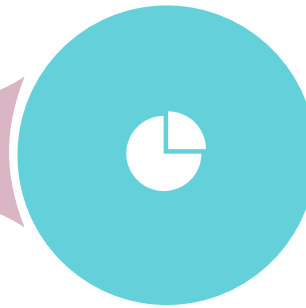
2. Prompt submission  
of quotations



3. Prompt updates on  
shipments



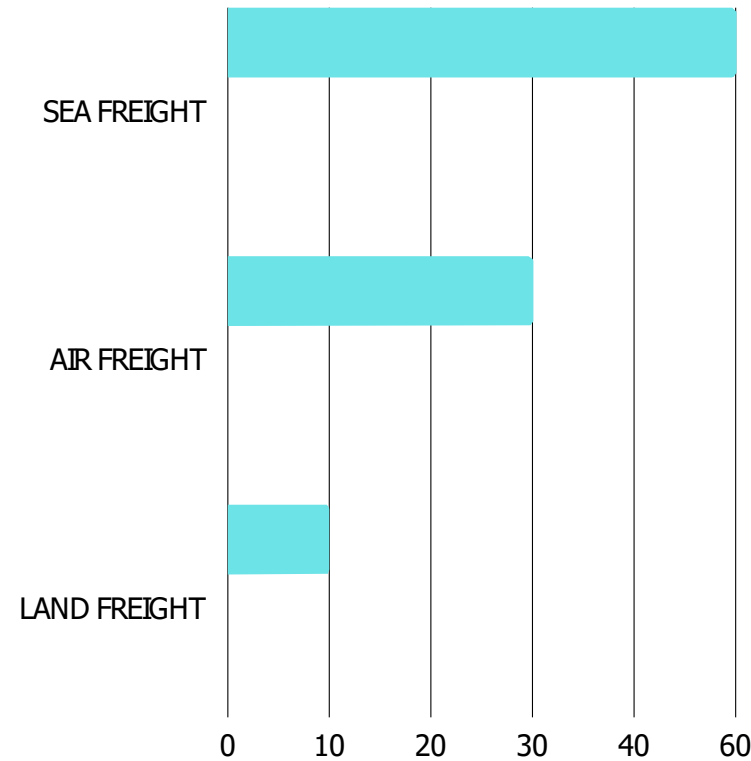
4. Prompt customs  
clearance



4. Prompt delivery of  
cargo



# FREIGHT SERVICE CHART



//////

SHOTTO Logistics handles 60% of Sea Freights, 30% of Air freights and 10% of Land freight annually.





//////

# GLOBAL NETWORK MEMBERSHIP

With memberships in over 10 Logistics Networks like FIATA, JCTTRANS , NEPTUNE CARGO, G7 NETWORK, EASY CARGO NETWORK, 3PL WORLDWIDE NETWORK, DF ALLIANCE, OOG NETWORK, OLO NETWORK, SHOTTO Logistics is able to coordinate shipments from any part of the world to the final delivery site.

# OUR PARTNERS



# OUR NETWORK



# OUR CLIENTS





## CONNECT WITH US TODAY

+233 (0) 246302357  
+233 (0) 554301511  
+233 (0) 303209098



info@shottogroup.com  
reuben.tetteh@shottogroup.com



www.shottogroup.com



Adjacent Ecobank, Tema Comm.11  
Branch, Tema - Ghana





# SHOTTO LOGISTICS

*Your all in one Logistics Partner*